

130222.5L421.081

URBINO LED 31W 2850lm 3000K IP66 08 - for town and local roads gray I

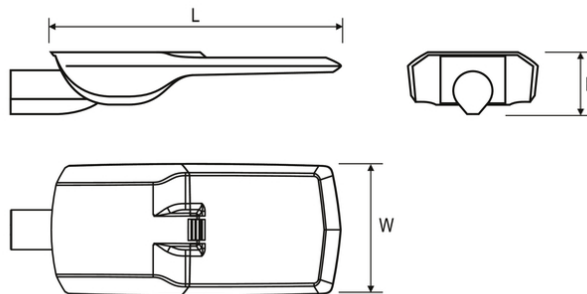
Professional streetlight luminaire for LED light sources.

TECHNICAL DATA	Mounting: on pillar $\varnothing 60/48\text{mm}$, on outriggers $\varnothing 60/48\text{mm}$ Body: high pressure die-cast aluminum Lateral Surface Wind Exposed: 0.039 m^2 Colour: gray RAL: 7035 Operating temperature range [°C]: $-40 \dots +55$
ELECTRICAL DATA	Power supply efficiency: $>95\%$ Power: 220-240V 50/60Hz Includes light source: yes Output current [mA]: 700 Type of equipment: ED Light source / lamp: LED
OPTICAL DATA	Way of lighting: direct Type of optic: 08 - for town and local roads Diffuser: tempered glass CRI/Ra: >70 Lumen LED [lm]: 3150 Lumen luminaire [lm]: 2850 Colour temperature [K]: 3000 ULOR / DLOR: 0% / 100%
GENERAL DATA	Lifetime (L80B10): 100 000 h Available on request: DALI, DIM 1..10V, LLOC, twilight sensor, knife switch, 10kV surge protection, NTC, access to the driver chamber without the use of tools Warranty: 5 years Application: express roads, local roads, town roads, residential area roads, pedestrian crossings, area lighting, avenues, promenade, cycle paths



Code	Protection Class	Type of optic	Luminaire power [W]	Lumen luminaire [lm]	Efficacy [lm/W]	Colour temperature [K]	CRI/Ra	Operating temperature range [°C]
130222.5L421.081	I	08 - for town and local roads	31	2850	92	3000	>70	$-40 \dots +55$

Code	Dimensions [mm] L W H	Pallet quantity	Quantity in package	Net weight [kg]
130222.5L421.081	550 250 100	20	1	6,8

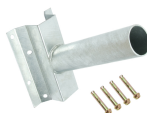


ACCESSORIES



150170.00817

Reducer 60/76 mm



150170.00818
150173.00906

Wall bracket ø60mm

LIGHT BEAM CURVES

WAY OF LIGHTING

