

# CorePro LED PLL



## CorePro LED PLL Mains 24W 830 4P

Philips CorePro LED PLL is the ideal uplamping solution for downlights & luminaires in a wide range of general lighting applications. It integrates a LED light source into a traditional fluorescent form factor to offer superb energy savings over a lifetime that's twice as long as fluorescent alternatives.

### Product data

General Information	
Cap base	2G11
Nominal lifetime	30,000 h
Switching Cycle	200,000
Lighting Technology	LED
Flux measurement reference	Sphere
Light Technical	
Colour Code	830 [CCT of 3000K]
Beam angle (nom.)	160 degree(s)
Luminous Flux	3,200 lm
Colour designation	White (WH)
Correlated Colour Temperature (Nom)	3000 K
Luminous efficacy (rated) (nom.)	133 lm/W
Colour consistency	<6
Colour rendering index (CRI)	80
LLMF at end of nominal lifetime (nom.)	70 %
Photobiological safety according to EN 62471	RG0
Operating and Electrical	
Line Frequency	50 to 60 Hz
Input frequency	50 to 60 Hz
Power Consumption	24 W

Lamp current (nom.)	127 mA
Starting time (nom.)	0.5 s
Warm-up time to 60% light	0.5 s
Power Factor (Fraction)	0.9
Voltage (nom.)	220-240 V
Ballast Compatibility	Mains
LED alternative to fluorescent lamp power	55 W
Inrush current at mains	9.6
Max. lamp no. on MCB B type 10A — Mains	80
Max. lamp no. on MCB B type 10A – EM ballast without Compensation Capacitor.	80
Max. lamp no. on MCB B type 10A – EM ballast with Compensation Capacitor.	16
Max. lamp no. on MCB B type 16A — Mains	128
Max. lamp no. on MCB B type 16A – EM ballast without Compensation Capacitor.	128
Max. lamp no. on MCB B type 16A – EM ballast with Compensation Capacitor.	25
Temperature	
T-Case maximum (nom.)	75 °C

CorePro LED PLL

Controls and Dimming	
Dimmable	No
Mechanical and Housing	
Lamp Finish	Frosted
Bulb material	Glass
Product length	528 mm
Bulb shape	PL-L
Net Weight (Piece)	0.192 kg
Approval and Application	
Energy Efficiency Class	E
Energy-saving product	Yes
Approval marks	RoHS compliance KEMA Keur certificate
Energy consumption kWh/1,000 hours	24 kWh
EPREL Registration Number	1370829
CE mark	Yes
EU RoHS compliant	Yes

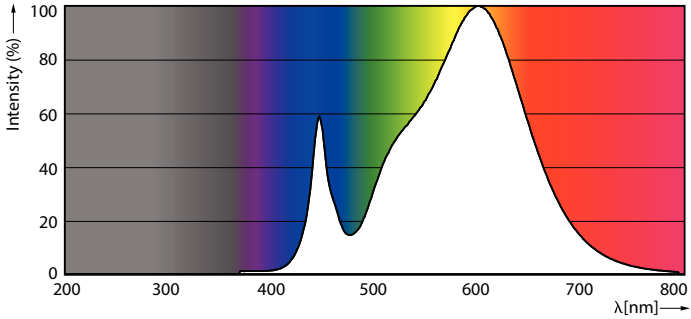
Flickering value (PstLM)	1
Stroboscopic effect	0.4
Ambient temperature range	-20°C to 45°C
Product Data	
Order product name	CorePro LED PLL Mains 24W 830 4P
Full product name	CorePro LED PLL Mains 24W 830 4P
Full EOC	872016915711800
Order code	15711800
Material no. (12 NC)	929003592802
Numerator – quantity per pack	1
EAN/UPC – Product/Case	8720169157118
Numerator – packs per outer box	10
EAN/UPC - Case	8720169157125

Dimensional drawing

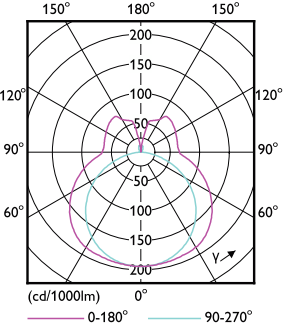


Product	D1	D2	A1	A2	A3
CorePro LED PLL Mains 24W 830 4P	17 mm	38 mm	453 mm	528 mm	535 mm

Photometric data

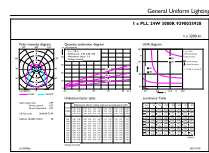


Spectral Power Distribution Colour - CorePro LED PLL Mains 24W 830 4P



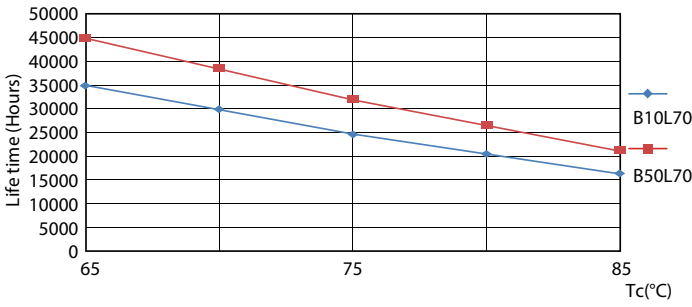
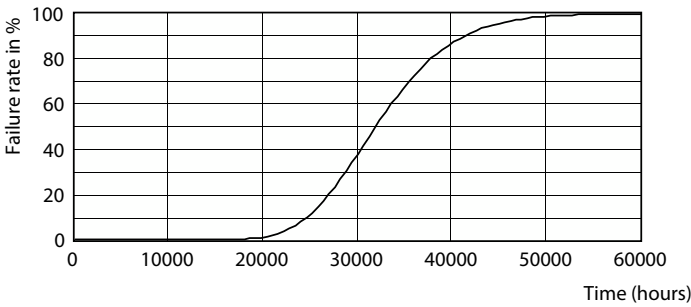
Light Distribution Diagram - CorePro LED PLL Mains 24W 830 4P

Photometric data

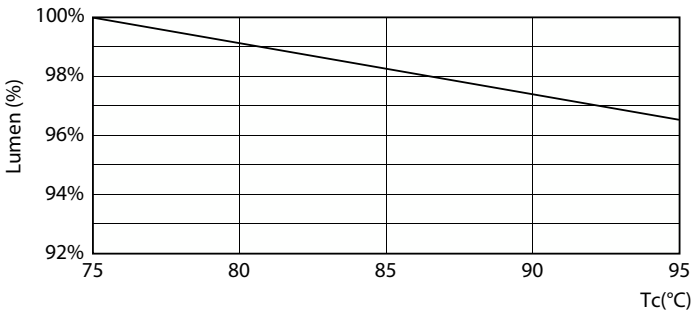


General uniform lighting - CorePro LED PLL Mains 24W 830 4P

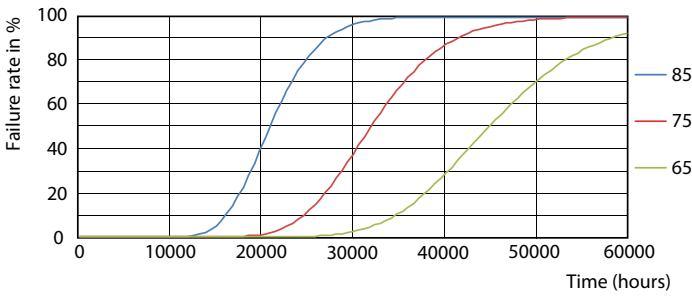
Lifetime



Life Expectancy Diagram



LifetimeVsTc



Lumen Maintenance Diagram - CorePro LED PLL Mains 24W 830 4P

FailureRate

CorePro LED PLL

Lifetime



Lumen Maintenance Diagram - CorePro LED PLL Mains 24W 830 4P

