



# CorePro LED PLL



## CorePro LED PLL EM/Mains 8W 830 4P

Philips CorePro LED PLL is the ideal uplamping solution for downlights & luminaires in a wide range of general lighting applications. It integrates a LED light source into a traditional fluorescent form factor to offer superb energy savings over a lifetime that's twice as long as fluorescent alternatives.

### Product data

General Information	
Cap base	2G11
Nominal lifetime	30,000 h
Switching Cycle	200,000
Lighting Technology	LED
Flux measurement reference	Sphere
Light Technical	
Colour Code	830 [CCT of 3000K]
Beam angle (nom.)	160 degree(s)
Luminous Flux	960 lm
Colour designation	White (WH)
Correlated Colour Temperature (Nom)	3000 K
Luminous efficacy (rated) (nom.)	120 lm/W
Colour consistency	<6
Colour rendering index (CRI)	80
LLMF at end of nominal lifetime (nom.)	70 %
Photobiological safety according to EN 62471	RG0
Operating and Electrical	
Line Frequency	50 to 60 Hz
Input frequency	50 to 60 Hz
Power Consumption	8 W

Lamp current (nom.)	42 mA
Starting time (nom.)	0.5 s
Warm-up time to 60% light	0.5 s
Power Factor (Fraction)	0.9
Voltage (nom.)	220-240 V
Ballast Compatibility	EM
LED alternative to fluorescent lamp power	18 W
Inrush current at mains	8
Max. lamp no. on MCB B type 10A — Mains	90
Max. lamp no. on MCB B type 10A – EM ballast without Compensation Capacitor.	180
Max. lamp no. on MCB B type 10A – EM ballast with Compensation Capacitor.	30
Max. lamp no. on MCB B type 16A — Mains	150
Max. lamp no. on MCB B type 16A – EM ballast without Compensation Capacitor.	290
Max. lamp no. on MCB B type 16A – EM ballast with Compensation Capacitor.	49
Temperature	
T-Case maximum (nom.)	70 °C

CorePro LED PLL

Controls and Dimming	
Dimmable	No

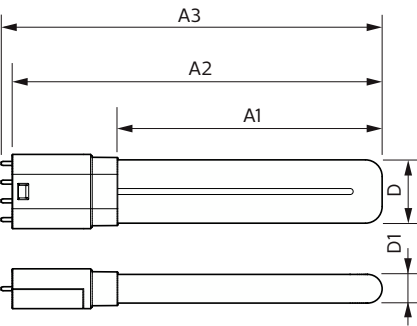
Mechanical and Housing	
Lamp Finish	Frosted
Bulb material	Glass
Product length	218 mm
Bulb shape	PL-L
Net Weight (Piece)	0.085 kg

Approval and Application	
Energy Efficiency Class	E
Energy-saving product	Yes
Approval marks	RoHS compliance KEMA Keur certificate
Energy consumption kWh/1,000 hours	8 kWh
EPREL Registration Number	1370823
CE mark	Yes
EU RoHS compliant	Yes

Flickering value (PstLM)	1
Stroboscopic effect	0.4
Ambient temperature range	-20°C to 45°C

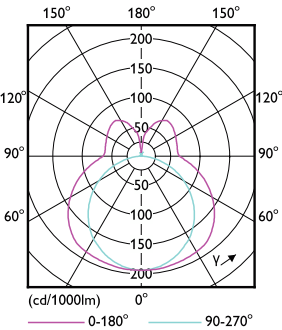
Product Data	
Order product name	CorePro LED PLL EM/Mains 8W 830 4P
Full product name	CorePro LED PLL EM/Mains 8W 830 4P
Full EOC	872016915699900
Order code	15699900
Material no. (12 NC)	929003592202
Numerator – quantity per pack	1
EAN/UPC – Product/Case	8720169156999
Numerator – packs per outer box	10
EAN/UPC - Case	8720169157002

Dimensional drawing

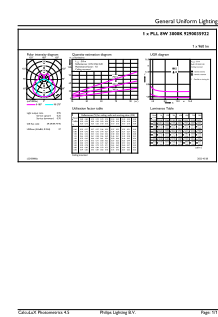


Product	D1	D2	A1	A2	A3
CorePro LED PLL EM/Mains 8W 830 4P	17 mm	38 mm	156 mm	218 mm	224 mm

Photometric data



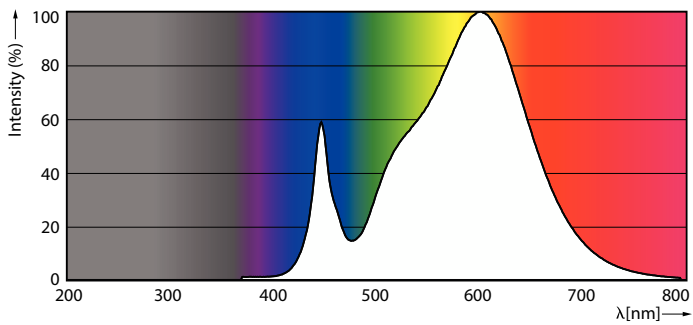
Light Distribution Diagram - CorePro LED PLL EM/Mains 8W 830 4P



General uniform lighting - CorePro LED PLL EM/Mains 8W 830 4P

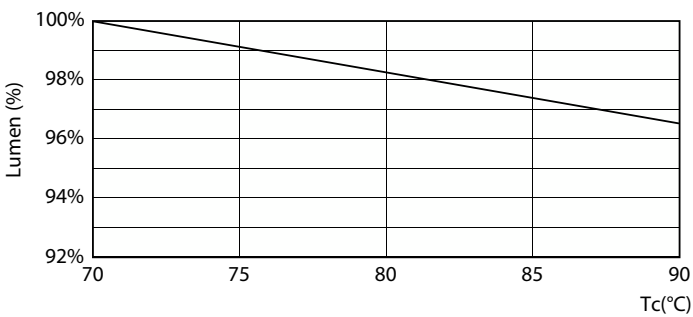
CorePro LED PLL

Photometric data

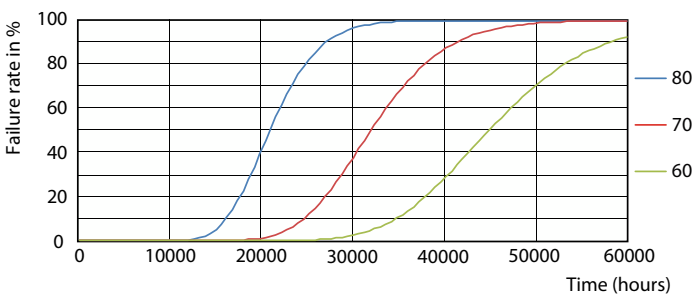


Spectral Power Distribution Colour - CorePro LED PLL EM/Mains 8W 830 4P

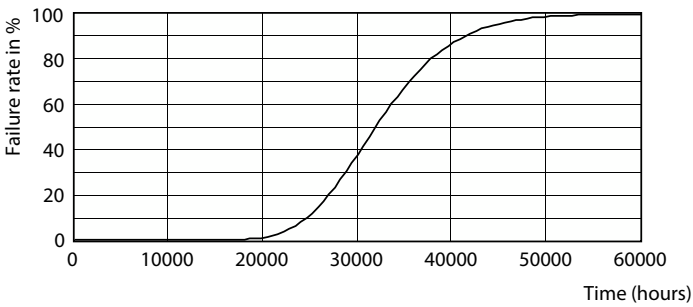
Lifetime



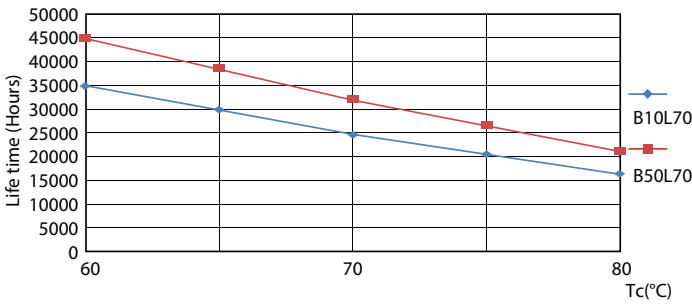
Lumen Maintenance Diagram - CorePro LED PLL EM/Mains 8W 830 4P



FailureRate



Life Expectancy Diagram



LifetimeVsTc

CorePro LED PLL

Lifetime



Lumen Maintenance Diagram - CorePro LED PLL EM/Mains 8W 830 4P

