


**300090.00053**
**ATLANTYK LB LED GEN.2 77W 10000lm 4000K gray STANDARD**

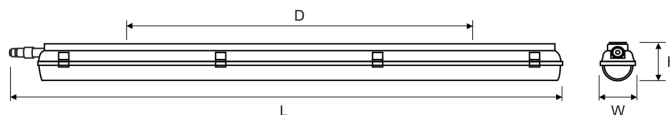
Hermetic LED luminaire, water-jet protected, dedicated to use in industrial environments.

|                        |  |
|------------------------|--|
| <b>TECHNICAL DATA</b>  | <b>Mounting:</b> directly on the ceiling, suspended, with mounting brackets (included)<br><b>Body:</b> polycarbonate<br><b>Colour:</b> gray<br><b>Mounting on flammable surfaces:</b> yes<br><b>Operating temperature range [°C]:</b> -20 ... +35  |
| <b>ELECTRICAL DATA</b> | <b>Power supply efficiency:</b> >91%<br><b>Power:</b> 220-240V 50/60Hz<br><b>Includes light source:</b> yes<br><b>Output current [mA]:</b> 600<br><b>Type of equipment:</b> STANDARD<br><b>Replacement of conventional technology [W]:</b> 2x80W (184W)<br><b>Light source / lamp:</b> LED                             |
| <b>OPTICAL DATA</b>    | <b>Light distribution:</b> rotationally-symmetric<br><b>Way of lighting:</b> direct<br><b>Diffuser:</b> polycarbonate<br><b>CRI/Ra:</b> ≥80<br><b>Lumen LED [lm]:</b> 11500<br><b>Lumen luminaire [lm]:</b> 10000<br><b>Colour temperature [K]:</b> 4000   |
| <b>GENERAL DATA</b>    | <b>Lifetime (L80B10):</b> 60 000 h<br><b>Additional information:</b> stainless steel clips included<br><b>Other remarks:</b> outdoor use only under a cover, do not expose to direct sunlight and rain<br><b>Warranty:</b> 3 years<br><b>Application:</b> parking areas, production halls, electricity plants, roofing |



| Code         | Replacement of conventional technology [W] | Luminaire power [W] | Lumen luminaire [lm] | Efficacy [lm/W] | Colour temperature [K] | CRI/Ra | Operating temperature range [°C] | Emergency kit |
|--------------|--|---------------------|----------------------|-----------------|------------------------|--------|----------------------------------|---------------|
| 300090.00053 | 2x80W (184W)                               | 77                  | 10000                | 130             | 4000                   | ≥80    | -20 ... +35                      | nie           |

| Code         | Dimensions [mm] L W H | Mounting dimensions [mm] D | Pallet quantity | Quantity in package | Net weight [kg] |
|--------------|-----------------------|----------------------------|-----------------|---------------------|-----------------|
| 300090.00053 | 1650 134 99           | 1100                       | 60              | 1                   | 2,8             |



## ACCESSORIES



150020.00695

Through wiring luminaire line end cap (STANDARD + TW5x2,5 mm<sup>2</sup>)

## LIGHT BEAM CURVES

## WAY OF LIGHTING

